

JCase705 PROTECTIVE CASE FOR IC-705, **WATERPROOF, POTA/SOTA**

<https://chelegance.com/products/cntou-jcase705-protective-case-for-ic-705-waterproof-pota-sota/>



1-1. DESCRIPTION & SPECIFICATION

The whole unit is housed in a waterproof enclosure with the metal panel, internal bracket of the Icom-705.

Expansion slots on the bottom for antennas or feeders, feeder ends, or hand microphones.

The waterproof and dustproof design can provide perfect protection for the radio.



Product outer box size	274*227*155mm (external) 239*173*141mm (inside)
Product weight	1.85kg
Features	Waterproof



1-2. PART LIST

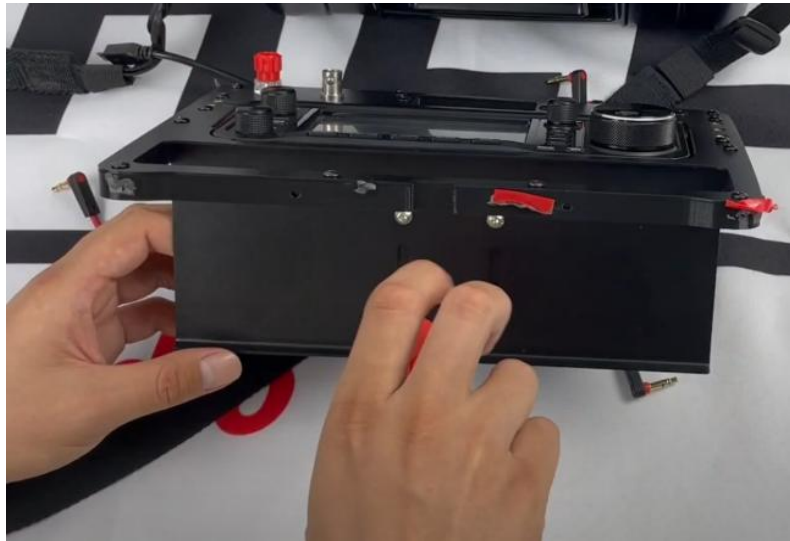
- 1×JCase705
- 1×705 Specialized Metal Panel
- 1×Bag of Matching Screws

1-3. INSTALLATION GUIDE

1. take out the screws used to hold in place.



2. Securing the IC-705 to the panel.



3. Plug the panel control cable into the corresponding position of the IC-705.



4. Schematic diagram of finished installation.



1-4. RECOMMENDATIONS ON ACCESSORIES

[EXTERNAL MEMORY KEYBOARD FOR ICOM & YAESU](#)

[50OHMS SMA/UHF/N/BNC ADAPTOR KITS](#)

Reach out to us if you have any problems: support@chelegance.com

HAVE FUN WITH JCase705, 73!